



## English as a Second Language (ESL)

ESL Pathway - For students with literacy development in their first language, typically French.



### STAGE ONE: Survival English

Students use basic English to meet immediate needs.

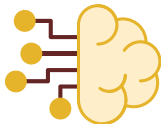
**Teacher Look-fors:** uses gestures, one- or two-word responses, may rely on peers.



### STAGE TWO: Support Communication

Students participate in familiar routines and tasks with support.

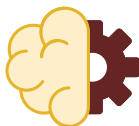
**Teacher Look-fors:** uses phrases, sentence frames, responds to guided questions.



### STAGE THREE: Independent Communication

Students use English with more confidence in the classroom and social settings.

**Teacher Look-fors:** engages in discussions, asks and answers questions, write in simple texts.



### STAGE FOUR: Academic Proficiency

Students communicate clearly and accurately, approaching native-like proficiency.

**Teacher Look-fors:** uses academic language, understands nuance, writes with structure and detail.

These stages are flexible and overlapping. Students may move through them at different paces depending on their background, confidence, and exposure to English.

*Use this guide to adapt your instruction and provide “just-right” support.*