



## English Language and Literacy Development (ELD)

ELD Pathway - For students with limited or interrupted formal education



### STAGE ONE: Emerging Use of English

Students begin to understand and use standard English words and phrases.

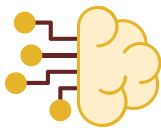
**Teacher Look-fors:** repeats, imitates, responds non-verbally, copies written notes.



### STAGE TWO: Supported Engagement

Students engage in familiar tasks using basic English with help.

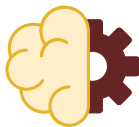
**Teacher Look-fors:** follows instructions, uses short sentences, begins reading simple texts.



### STAGE THREE: Accurate Use in Communication

Students use English more fluently in various classroom situations.

**Teacher Look-fors:** writes short paragraphs, participates in group work, follows multi-step instructions.



### STAGE FOUR: Literacy Growth

Students build reading and writing skills in English for academic tasks.

**Teacher Look-fors:** reads for meaning, writes structured texts, uses strategies for comprehension.

Students in the ELD pathway may need additional time and support as they build both English language skills and foundational literacy. Many are developing these skills for the first time while adjusting to a new educational environment. Instruction should be flexible, culturally responsive and rooted in trust and encouragement.

*Use this guide to offer scaffolded, strengths-based support that meets students where they are in their language development and helps them move forward with confidence.*